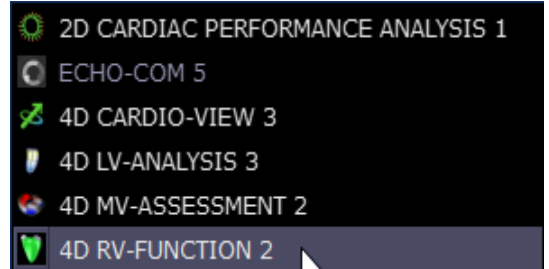




## 4D RV-FUNCTION – QUICK GUIDE

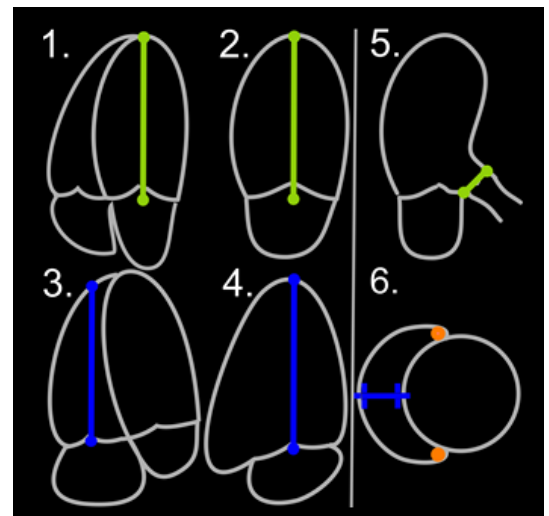
### How to start the application

- Start from IMAGE-COM\*
- Select a 3D volume
- Press the right mouse button and select 4D RV-FUNCTION\*

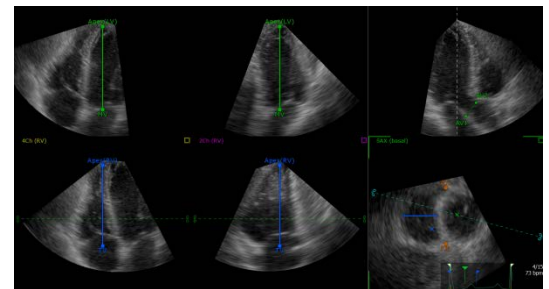


### View Adjustment

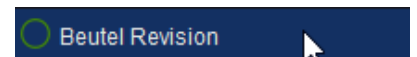
- Use the help guide on the right bottom corner to place the landmarks. (Note the sequence of images)



- Reposition the landmarks by drag and drop
  - LV Apex & Mitral valve (level of annulus)
  - RV Apex & Tricuspid valve (level of annulus)
  - AV1 & AV2
  - AJL, PJL
    - AJL (Anterior Junction Landmark)
    - PJL (Posterior Junction Landmark)
  - At least place the blue horizontal line at the RV septum and RV free wall

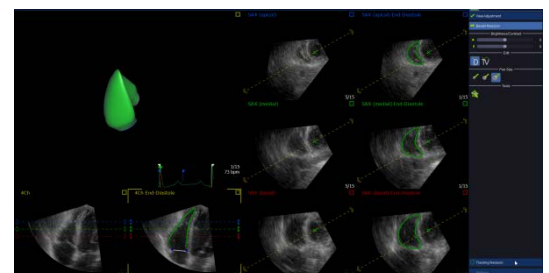


To continue press "Beutel" Revision"



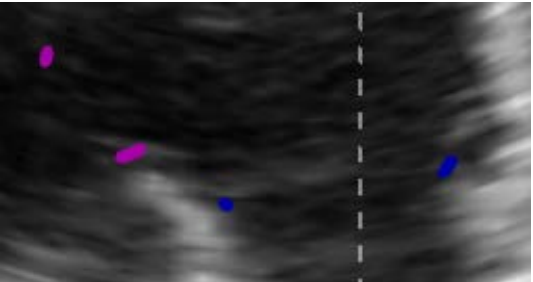
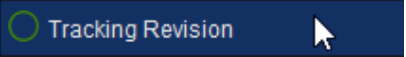
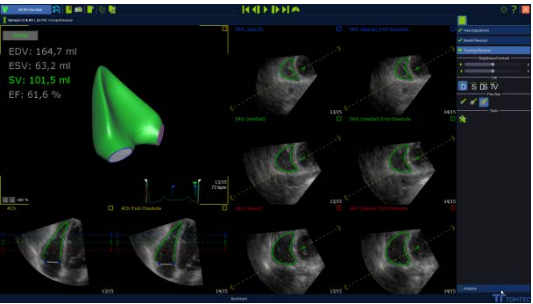

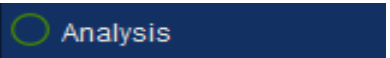





### Beutel Revision

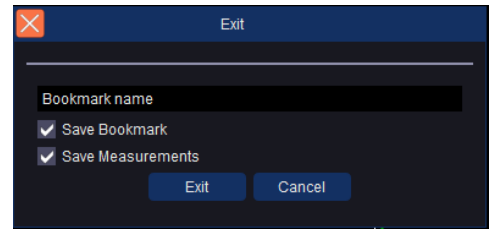
- Modify the contour proposal by drag and drop at the paused clips if necessary



\* Is part of TOMTEC-ARENA. TOMTEC-ARENA and Beutel are registered trademarks of TOMTEC Imaging Systems GmbH in Germany and/or other countries.

<ul style="list-style-type: none"> <li>→ Select the button “TV” to adjust the position of the tricuspid or pulmonary annulus</li> </ul>	
<ul style="list-style-type: none"> <li>→ To adjust the view press the left mouse button on the arrow at the upper part of the image and move the mouse to the left or to the right side</li> </ul>	
<ul style="list-style-type: none"> <li>→ Adjust the blue or pink markers by drag and drop with left mouse clicks. Place the markers at the annulus positions of the valves</li> </ul>	
<ul style="list-style-type: none"> <li>→ To continue press “Tracking Revision”</li> </ul>	
<p><b>Tracking Revision</b></p> <ul style="list-style-type: none"> <li>→ Modify the contour proposal by drag and drop at the suspended clips if necessary</li> </ul>	
<ul style="list-style-type: none"> <li>→ You can switch between ED / ES / DS and TV</li> </ul>	
<ul style="list-style-type: none"> <li>→ Press “Analysis” in the right hand lower corner to continue</li> </ul>	
<p><b>Analysis</b></p> <ul style="list-style-type: none"> <li>→ Switch between the tabs “Global” and “2D”</li> <li>→ Select the “2D” tab and click on a measurement.</li> <li>→ It can be modified in the views by drag and drop.</li> </ul>	
<p><b>Save and Exit</b></p> <ul style="list-style-type: none"> <li>→ Various saving options are available at the toolbar</li> </ul>	
<ul style="list-style-type: none"> <li>→ Exit the application on the upper right corner</li> </ul>	

- Put checkmarks at “Save Bookmark” and “Save Measurements”
- Insert a name for your bookmark
- To exit the application confirm with “Exit”



**Reopen an Analysis**

- To reopen an analysis press the right mouse button on the bookmark file and select 4D RV-FUNCTION

